

Operator safety

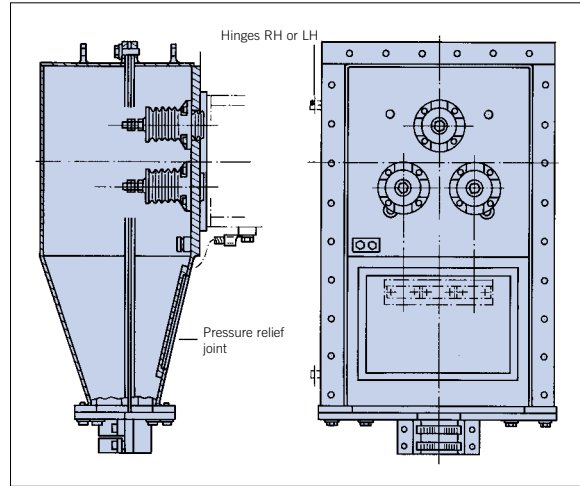
Our terminal boxes combine high short-circuit strength (terminals) with reliable shatterproofness (terminal box).

In the event of a fault, the internal pressure is vented in one direction only, thus preventing injuries due to flying debris. These properties have been verified in a neutral test laboratory in numerous internal fault tests on an infinite bus.

Terminal boxes, Type of protection 'Increased safety' Exe (Standard)

Ample dimensions of the terminal boxes make for simple and safe connection of the supply cables. For the connection, either cable lugs (standard) or terminal clamps (special) are provided. Compound filled cable entries are available, on request.

Terminal boxes meet the requirements of degree of protection IP55 to IEC 60529, and are designed for outdoor installation.



Terminal box for 10 kV and for fault levels 330 or 800 MVA. Relief joint at the rear.



Standard terminal box with 6 kV cast-resin bushings



Standard 10 kV terminal box

Minimum conductor cross-sections

In order to ensure the realisation of our safety concept, the following min. conductor cross-sections must be observed:

System fault level	Min. cond. cross-section	
	Cu in mm ² at U _N =	
MVA	6kV	10kV
<200	70	70
>200-250	95	70
>250-350	150	95
>350-500	185	150
>500-800	-	185

Terminal boxes, Type of protection 'Flameproof enclosure' Exd IIC (Special design)



Main and auxiliary terminal boxes Exd IIC



On request, Exd terminal boxes can be provided.

They are of fabricated construction and consist of a bushing plate, the box with cover, and an entry plate.

Entries can be either cable entries to EN 60079-1 or conduit entries.

These terminal boxes are separately tested and certified.